



Investing in healthy kids

School-based health centers provide convenient, high-quality care

- Kaiser Permanente (Group Health Cooperative prior to 2017) has been operating school-based health centers (SBHCs) in King County since 1996. Funding is provided by Public Health – Seattle & King County.
- Our clinicians provide students with primary care and mental health services, with an emphasis on preventive care.
- Referrals to community resources – for ongoing illness care, chemical dependency treatment, health insurance, and more – are an integral part of the program.

Serving the broader community

- Investments are focused in areas where students face significant barriers to accessing care, such as lack of health insurance, coverage with high deductibles, transportation issues, or a need to get confidential care.
- Kaiser Permanente awards grants to community organizations to expand health centers across Washington state.
- Kaiser Permanente provides funding to the Washington School-Based Health Alliance to support sustainability and scalability of the school-based health center model throughout the state.

For questions contact:
Courtney Smith
 State Government Relations Manager
 Courtney.L.Smith@kp.org
 425-308-9802

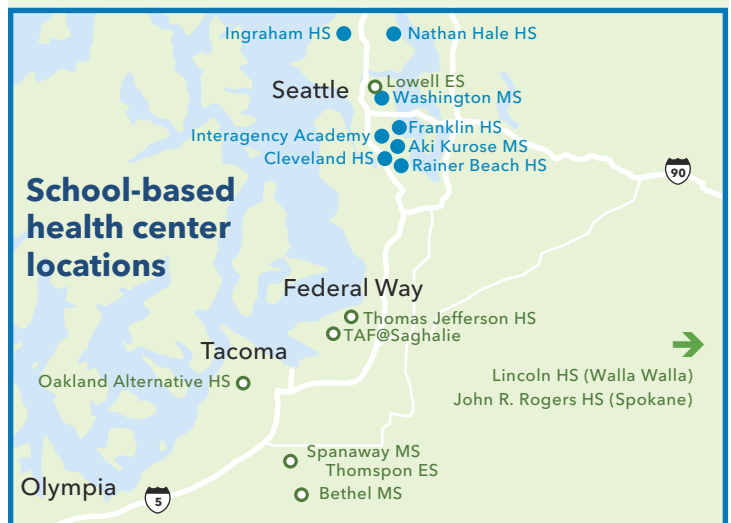
Fast facts

● School-based health centers operated by Kaiser Permanente

Schools	8
Youth served	2,336
Visits	11,471
Investment	\$583,250*

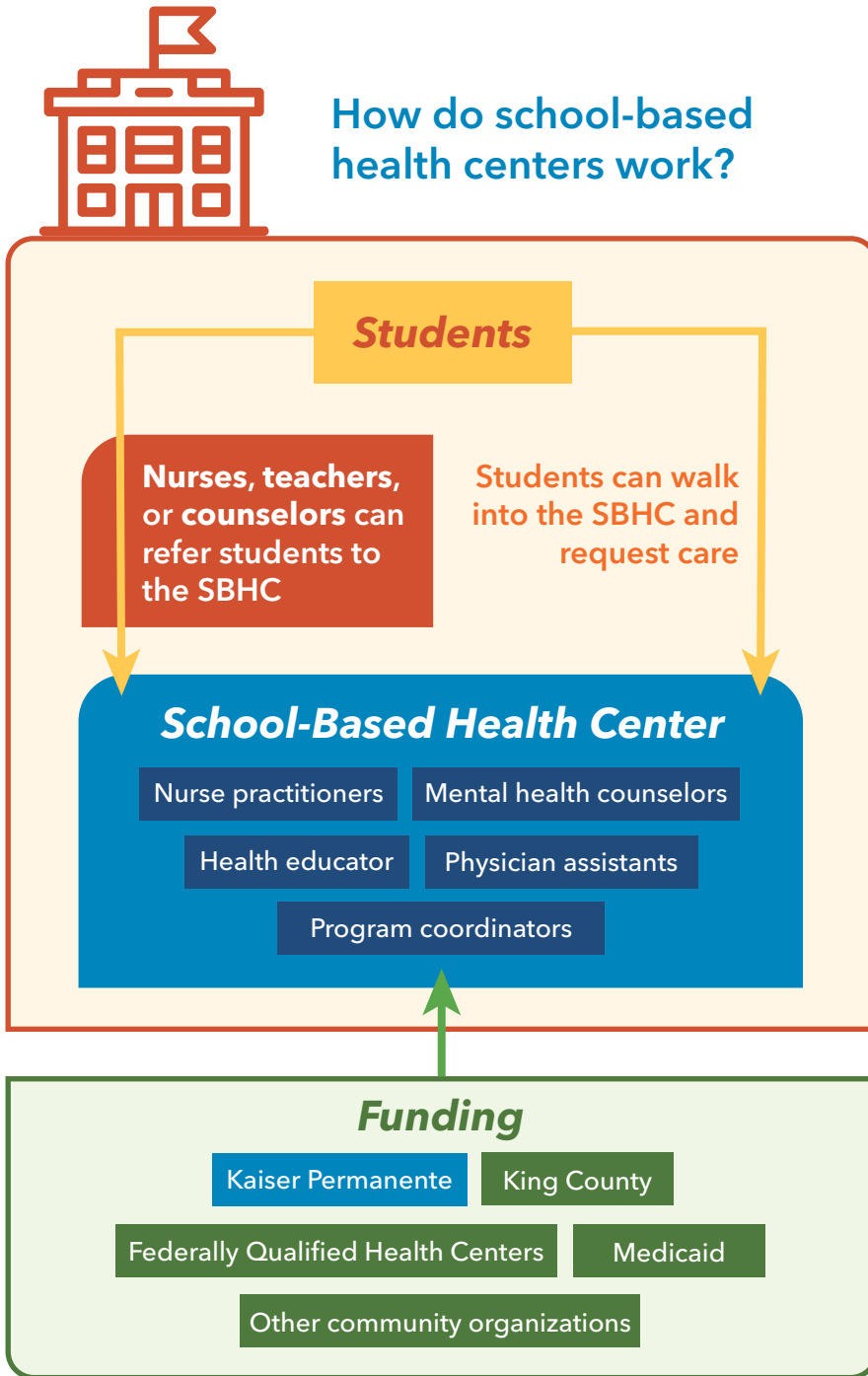
○ School-based health centers supported by Kaiser Permanente grant funding

Schools	8
Youth served	6,541
Investment	\$1.5 million



Helping students succeed and thrive

School-based health centers (SBHCs) play an integral role in the health, academic success, and graduation rates of students. Students with health issues can be diagnosed and treated quickly in a setting that is familiar, easily accessible, and trusted. Problems are caught early so kids can focus more fully on learning.



SBHC care teams work closely with the school staff to identify students who need care and coordinate their treatment. Students can also walk into the SBHC and request care.

Medical providers focus on preventive care, providing physicals, immunizations, care and management of ongoing health issues like asthma, and reproductive health care.

Mental health counselors offer individual psychotherapy, crisis intervention, and a variety of student support groups.

Health educator provides educational materials and presentations on topics that include depression, suicide, nutrition, and physical activity.

Program coordinators schedule appointments and help students, staff, and families connect with community resources.

SBHCs that are operated by Kaiser Permanente are primarily funded by King County's Families, Education, Preschool, and Promise Levy. Kaiser Permanente grants help fund other SBHCs, where Federally Qualified Health Centers are the health care sponsor.

* Source: Kaiser Permanente Washington Community Health Records, 2018. Includes in-kind contributions of Kaiser Permanente Washington staff time.